

PLASTER FOR CERAMIC HAND FORMERS

WHY CHOOSE SAINT-GOBAIN FORMULA PLASTER?

Saint-Gobain Formula plaster solutions meet different manufacturing needs:

Higher mechanical strength for automated lines where moulds are subject to shocks

Lower weight options for manual casting processes

Faster casting rates and better productivity

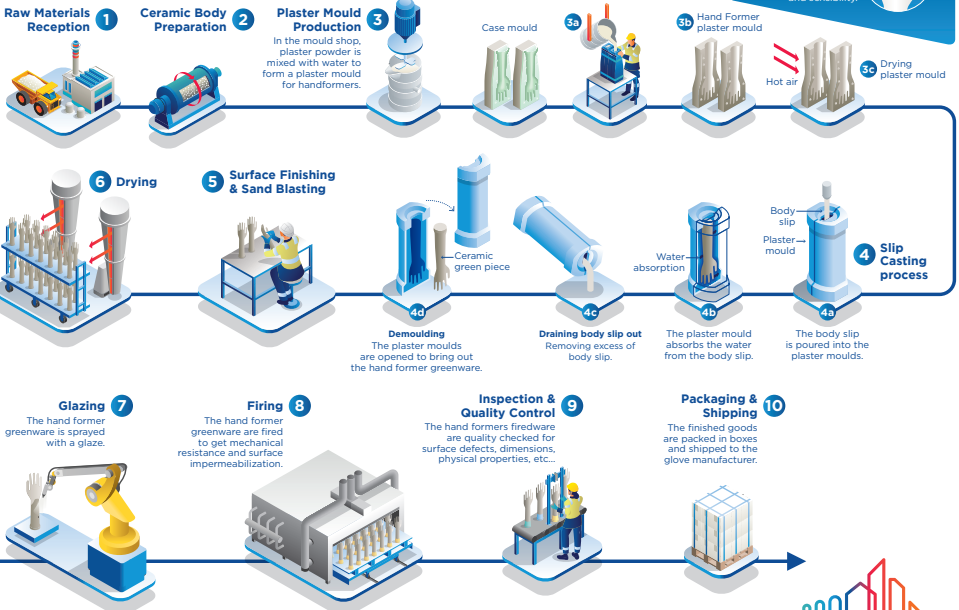
Longer mould life, helping to reduce maintenance and downtime

FOCUS ON

HAND FORMERS CERAMIC PRODUCTION

DID YOU KNOW?

Hand formers can have different surface patterns to allow the user to have better gripping/adhesion and sensibility.



HOW WE ENGINEER PERFORMANCE: BEHIND THE PLASTER

+ CONTROLLED PARTICLE SIZE DISTRIBUTION

For consistent porosity and casting performance

+ OPTIMISED WATER DEMAND








To reduce cracking and improve mould strength

+ ADDITIVES FOR IMPROVED DEMOULDING

Reduce sticking and post-casting work

+ ENGINEERED FOR SLIP COMPATIBILITY

Works with a wide range of ceramic slips used in hand formers

Product				Benefits
Supraduro MC 70Q		1.35:1	12 - 16 min	<ul style="list-style-type: none">- Designed for multicasting- High water absorption capacity- Consistent performance
Supraduro MC 70QS		1.35:1	8 - 12 min	<ul style="list-style-type: none">- Designed for multicasting- High water absorption capacity- Fast setting time to increase mould productivity
Supraduro MC 65HC		1.55:1	16 - 18 min	<ul style="list-style-type: none">- Designed for multicasting- Long mould life- High mechanical resistance
Supraduro MC 65A		1.50:1	12 - 17 min	<ul style="list-style-type: none">- Designed for automatic production lines with increased productivity- High casting rate and fast mould drying- Strong mechanical resistance

CONTACT US

Saint-Gobain Formula have expert technical teams to support Hand Former industry with adapted plaster to increase production efficiency



Scan the QR code to learn more about our plaster solutions for Ceramic Hand Formers.

